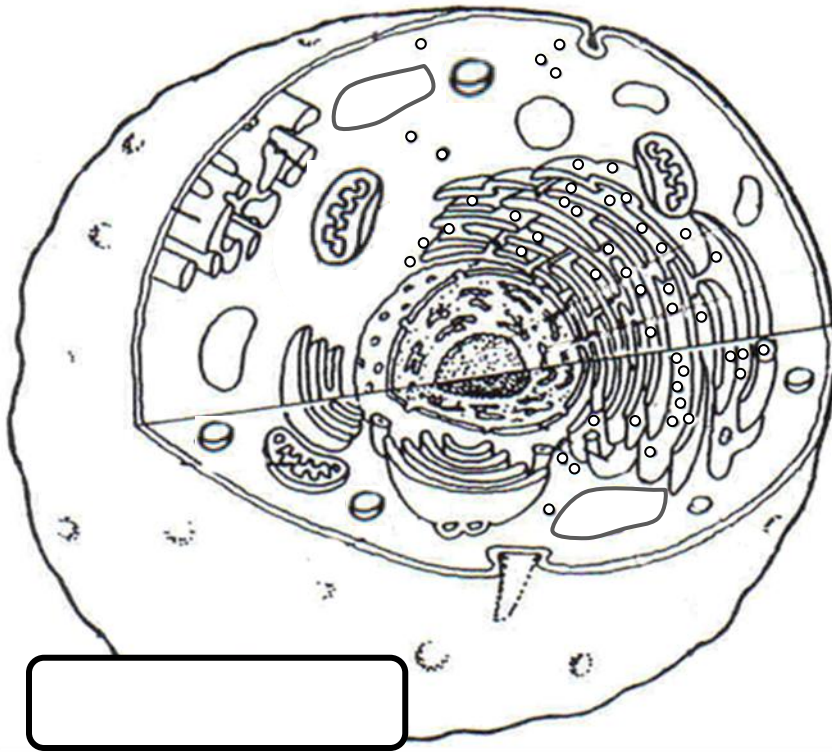


Plant & Animal Cells

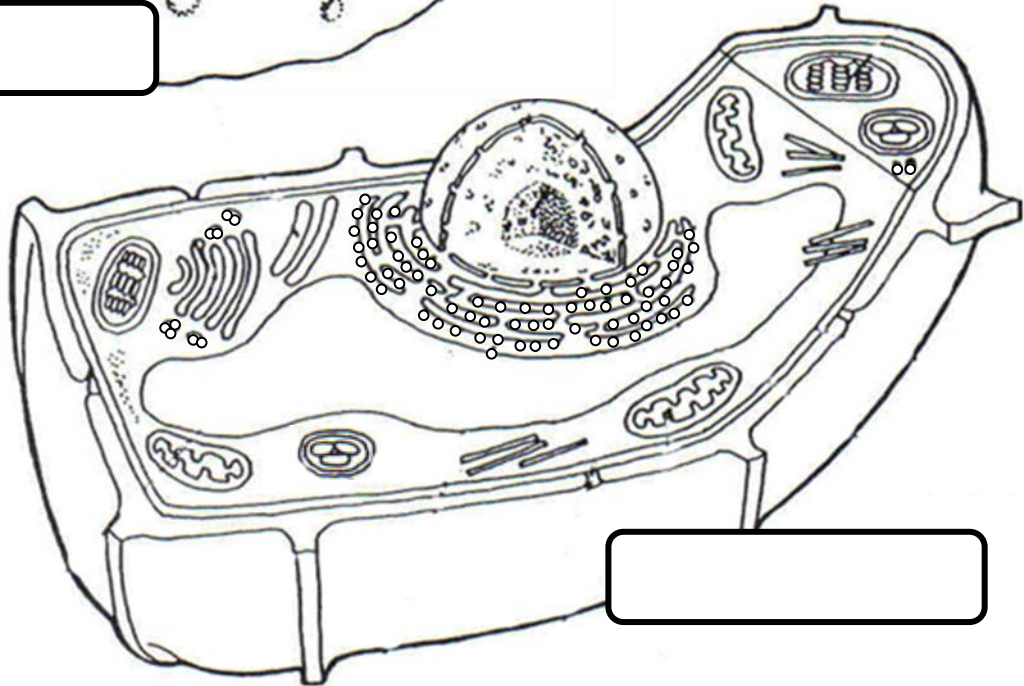
Name _____

- 1 - Label each cell using plant cell or animal cell.
- 2 - Use colored pencils to shade each organelle and the corresponding box in the key.



KEY:

- Cell Membrane (light blue)
- Cell Wall (dark green)
- Cytoplasm (white)
- Endoplasmic Reticulum (yellow)
- Lysosomes (brown)
- Mitochondria (red)
- Vacuoles (pink)
- Nucleus (purple)
- Chloroplasts (light green)
- Ribosome (black)



Which organelles were only found in the plant cell? _____