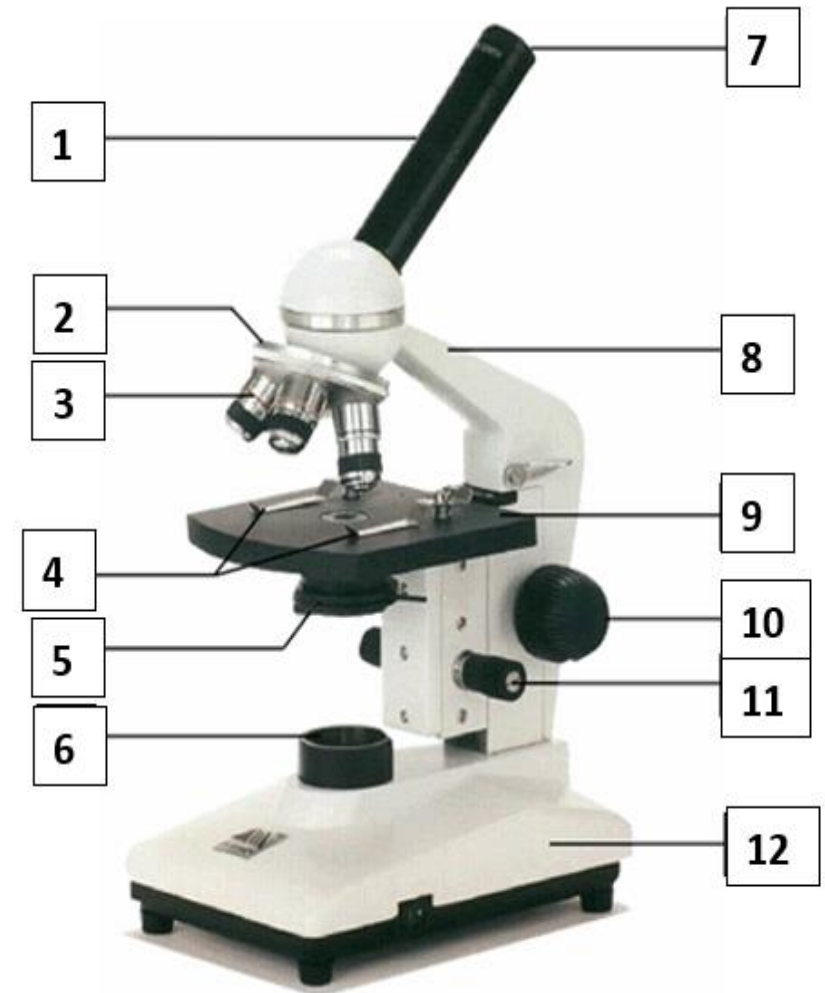


# Compound Microscope: Parts and Functions

Name: KEY

Date: \_\_\_\_\_

#	Name	Function
1	Body Tube	Holds eyepiece in place
2	Turret	Holds objective lenses and <u>turns</u> them into place.
3	Objective Lenses	Primary <u>magnification</u> source (ranges from <u>4x</u> - <u>40x</u> magnification). LOW: <u>4x</u> MED: <u>10x</u> HIGH: <u>40x</u>
4	Stage Clips	Holds the microscope <u>slide</u> in place
5	Diaphragm	Controls amount of <u>light</u>
6	Light	Illuminates the slide
7	Eyepiece	<u>What you look through</u> - usually has <u>10x</u> magnification
8	Arm	Support the body tube; used to carry the microscope
9	Stage	Where <u>slide is placed</u> ; can be moved up/down using adjustment knobs
10	Coarse Adjustment Knob	<u>Focus</u> the microscope; Only to be used with <u>LOW</u> and <u>MEDIUM</u> power objective lenses
11	Fine Adjustment Knob	<u>Focus</u> the microscope; Used with <u>HIGH</u> -power objective lenses
12	Base	Supports the microscope; used to carry the microscope



On the back of this page, answer the following questions:

- 1) How should you pick up a microscope?
- 2) How should you put away a microscope? (CLOSE)

1) **One hand on arm, one hand on base. Hold close to your body**

2) **Light off; Objective lens set to low; Stage lowered all the way; Eyepiece rotated back (over the arm); Cord wrapped around the base**