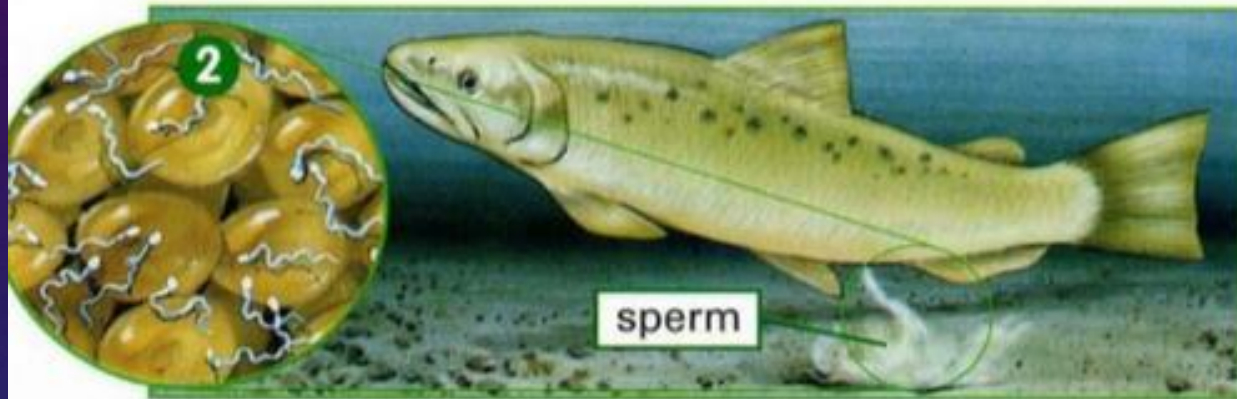
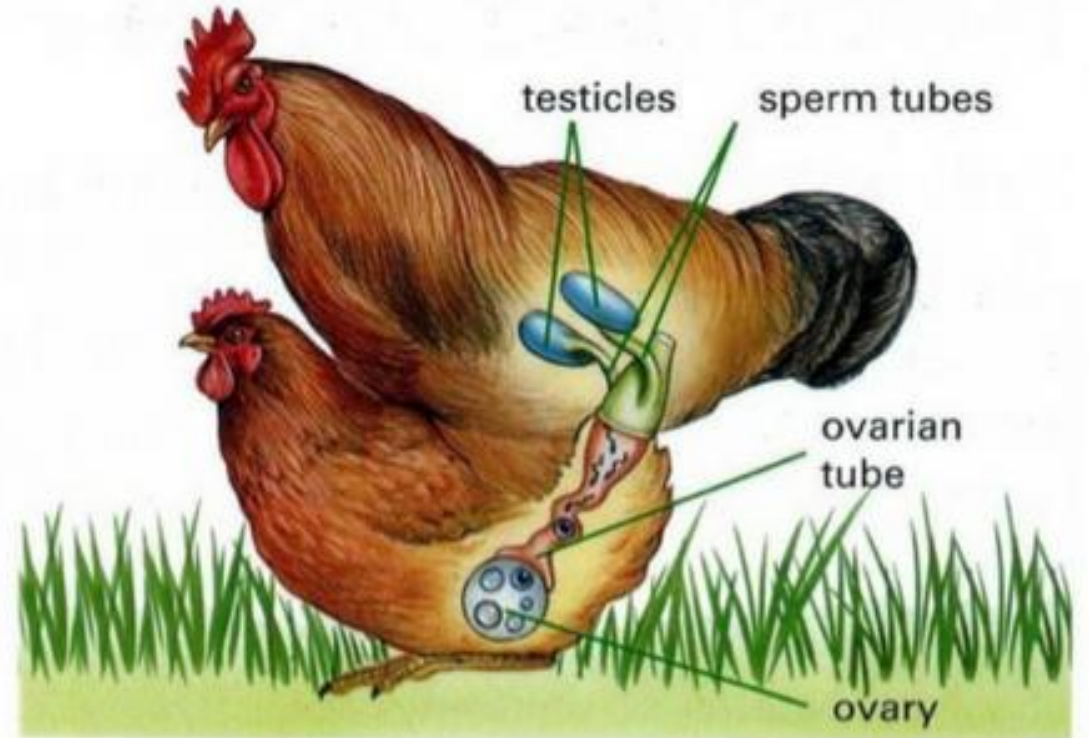


External Fertilization vs Internal Fertilization



Fertilisation is external in salmon. The female deposits her ova on the riverbed (1). The male then deposits his sperm in the water and they swim to fertilise the ova (2).



The fertilisation between a cock and hen is an example of internal fertilisation.

www.majordifferences.com

INTERNAL FERTILIZATION

- Fertilization inside one parent's body (usually via sexual intercourse)



EXTERNAL FERTILIZATION

- Sperm and egg join outside of body
- **Spawning**: releasing eggs and sperm into water
 - E.g. marine animals (amphibians, fish, invertebrates)



PROS AND CONS

Internal Fertilization

- High cost per offspring (yolk, parenting)
- Few offspring produced
- High survival rate
- Requires physical contact between parents

External Fertilization

- Low cost per offspring
- Many offspring produced
- Low survival rate
- No physical contact between parents (good for sessile* or slow-moving species)