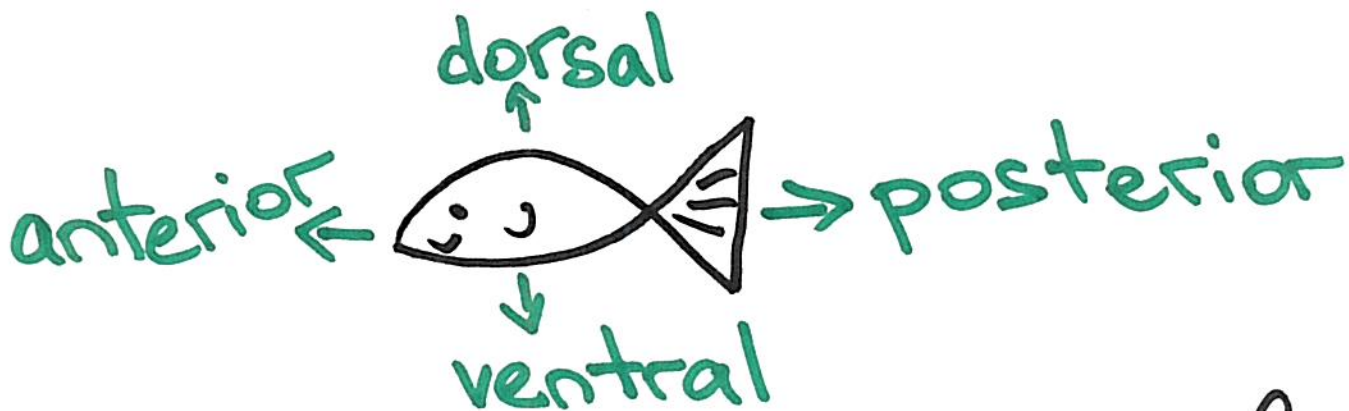


Introduction / Microscopy ^{Feb.} 2

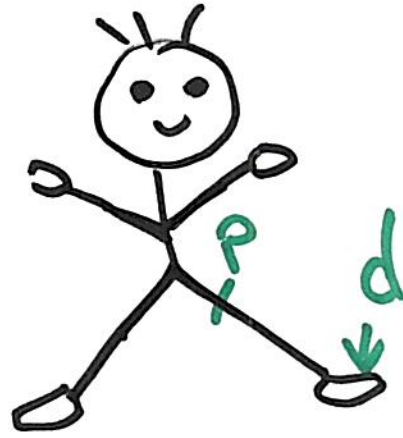
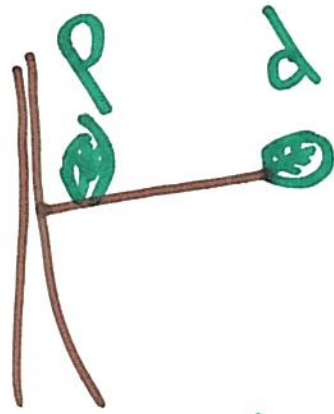
General Anatomical Terms

- animals/plants/fungi

- dorsal: the upper side (or back for something with a backbone)
- ventral: the underside (or belly)



- distal: situated away from the center of the body or point of attachment
- proximal: situated closer to the center of the body or point of attachment



- animals only

- anterior: the front of the body (often has head/sensory organs)
- posterior: the back of the body

2. Types of Microscope Slides

a) Whole mount (w.m.)
- put entire specimen on slide



b) Longitudinal section (l.s.)

- any lengthwise (long)
section through the
body



c) Cross section (c.s. / x.s.)

- a section that separates
the anterior from the
posterior



