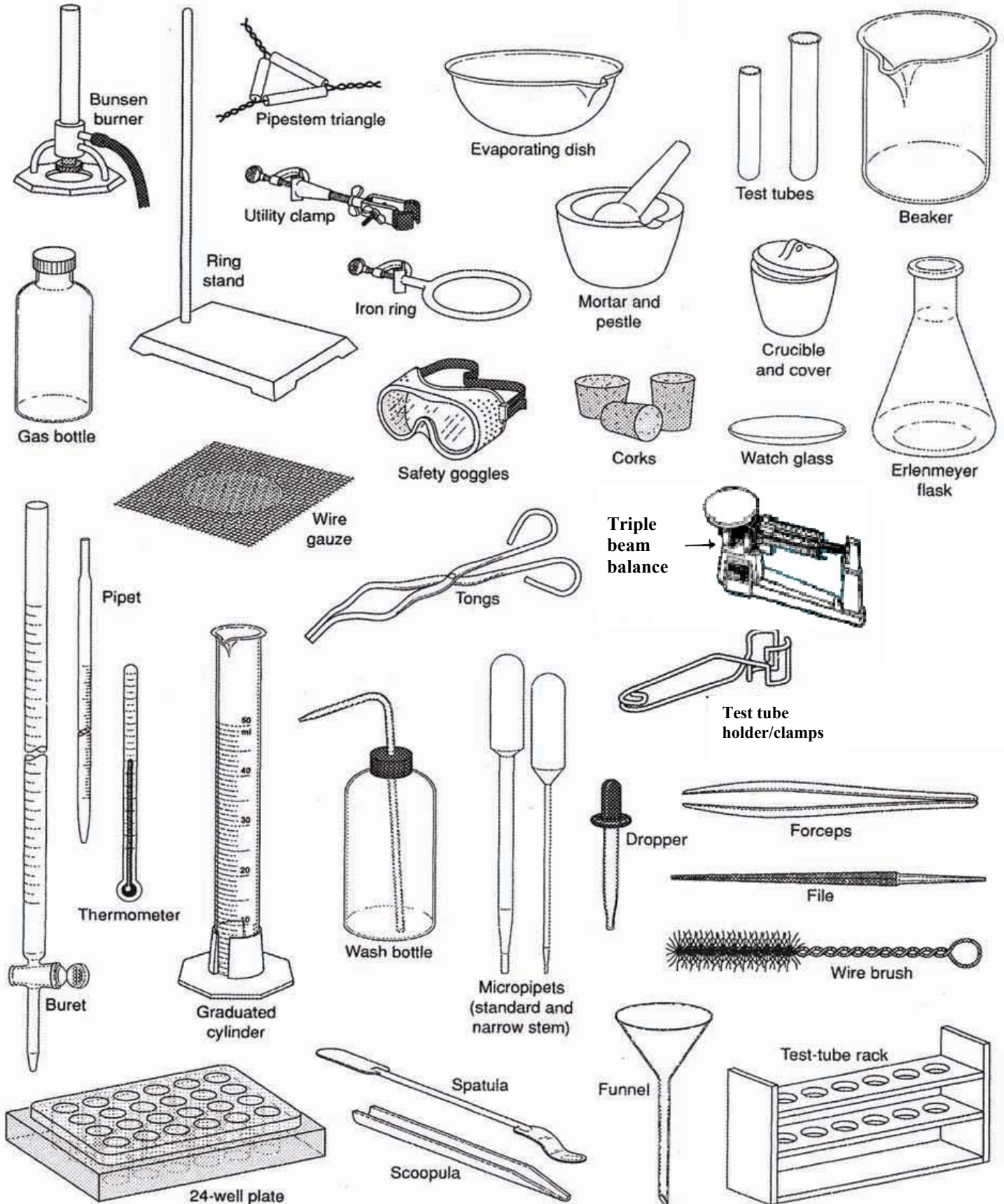


**Directions:** A number of items that may be used in the laboratory are shown below. Study this page and decide what the items may be used for. Use the names of the equipment shown to answer the questions included.



## Lab Equipment

*Unscramble the words to name each piece of equipment that would be useful for each of the following tasks:*

1. Holding 100mL of water (ebkare) \_\_\_\_\_
2. Measuring 27 mL of liquid (daudgtear ldnreiy) \_\_\_\_\_
3. Measuring exactly 43mL of an acid (rtube) \_\_\_\_\_
4. Massing out 120 g of sodium chloride (acbnela) \_\_\_\_\_
5. Suspending glassware over the Bunsen burner; putting hot objects on top of (rwei zeagu) \_\_\_\_\_
6. Used to pour liquids into containers with small openings or to hold filter paper (unfenl) \_\_\_\_\_
7. Mixing a small amount of chemicals together (lewl letpa) \_\_\_\_\_
8. Heating contents in a test tube (estt ubet smalcp) \_\_\_\_\_
9. Holding many test tubes filled with chemicals (estt ubet karc) \_\_\_\_\_
10. Used to clean the inside of test tubes or graduated cylinders (iwer srboh) \_\_\_\_\_
11. Keeping liquid contents in a beaker from splattering (tahcw sgasl) \_\_\_\_\_
12. A narrow-mouthed container used to transport, heat or store substances, often used when a stopper is required (ymerereel kslaf) \_\_\_\_\_
13. Heating contents in the lab (nuesnb bneurr) \_\_\_\_\_
14. Transport a hot beaker (gntos) \_\_\_\_\_
15. Protects the eyes from flying objects or chemical splashes (ggloges) \_\_\_\_\_
16. Used to grind chemicals to powder (tmraor nda stlepe) \_\_\_\_\_

Directions: In the word search below are the names of several pieces of lab equipment. As you find each piece of equipment, record its name on the list.

G L X E L O V W F W F B Z A L M Q W V W Z C T L H  
 F P V T E S T T U B E S J X I K C A N K Z K Y G S  
 D B Y Q G E H Y R G K P Q R I N E S A H P X V G I  
 P E H I I J Y C A M F S I R L L Z H S P Y Q G N D  
 W H L V P D Y O A F X G I J B J F B M O J Q W R G  
 T H E R M O M E T E R N P I Y S T O P P E R S T N  
 J L S V H O A D D Y G K C R N B J T E Y M D N Y I  
 E L T T O B S A G S N U A C O S U T L C W E I Z T  
 D L W C H P M L T B R Z N Y T U B L I Y E D B G A  
 M Q G B Y S A A K C W H I K D W V E F O B X L N R  
 Z I I N D D N R W X Y F L Y R X C F J H N J V I O  
 M M C A A D P B E L L Q M W D V H K Z E Z N L R P  
 S O F R E I G D I N Q U U P G T T T M P Z S W N A  
 W H Q B O V R C K H R P Q M F F D E I T S O S O V  
 Z Z Z T Z P Y T R L M U B Q B X D I P L U N G R E  
 S C P F H Z I D M A S C B N D P O B Z I S G U I Q  
 Q D P T R B F P L E Z C S B B L E A K Q P H F Q S  
 X A P A I O C C E N T V O K A U Y Q H N W M Y D P  
 Q X X W R V Y H Y T D S X O Q L I C X H Z V F E A  
 B L Z C G T Y S M Z S F E U P V J Y F Y A I G R T  
 P M E H I R E P P O R D J P L U O R N I B T S W U  
 L P V L Q V W O A G B Z A V I Z L P I M S Q U Q L  
 S S I H C K O M O W U A I Q L P N A U S I A C M A  
 X T Q G F J O B N S E P C L O X C G G T B B B X V  
 U F L M F C V M C W H W V L R O P V P W O M C D S

- |    |     |
|----|-----|
| 1. | 10. |
| 2. | 11. |
| 3. | 12. |
| 4. | 13. |
| 5. | 14. |
| 6. | 15. |
| 7. | 16. |
| 8. | 17. |
| 9. | 18. |